

# **iSentryIII Content Filtering Appliance**

## **Quick Start Manual**

**REV 1.6**

**July 14, 2007**



## **iSentryIII Appliance Introduction**

Thank you for purchasing the iSentryIII Content Filtering Appliance. The unit is a fully integrated hardware/software solution designed to provide maximum protection from unwanted objectionable inappropriate Internet content.

The iSentry filtering software is capable of blocking Web access based on numerous different criteria. The filter lists provide high quality, comprehensive content blocking with predefined categories, including porn filter, adult content, news, employment, chat, etc. All of which are easily selected by the click of a mouse.

The Systems Administrator can easily customize the web filtering software's configuration to accommodate a variety of users while conforming to management's security policies. Four models are available, each properly configured to provide the most competitive price/performance solutions ranging for home, SOHO, schools and churches, and corporate multi-thousand workstation installations. After unpacking the unit, check the bottom side for a sticker which will indicate the model number and a date code. The model number will indicate the maximum number of concurrent users which can be accessing the Internet through the appliance without speed degradation.

<b>MODEL</b>	<b>DESCRIPTION</b>
<b>iSentryIII-A</b>	For installations up to 10 concurrent workstations
<b>iSentryIII-B</b>	For installations up to 299 concurrent workstations
<b>iSentryIII-C</b>	For installations up to 599 concurrent workstations
<b>iSentryIII-D</b>	For installations up to 1500 concurrent workstations

### **Product Description**

The iSentryIII Content Filtering Appliance is designed to provide the very best in an integrated, easy to use and administrate system. No knowledge of Linux or any other software application is required for installation and use. Your unit is bundled with a **one year update subscription** which requires no intervention on the user's part. To activate the update subscription, email the IP address for your Internet service to: [techsupport@firewall-servers.com](mailto:techsupport@firewall-servers.com) .Also bundled with the unit at no charge are 30 days of **email** techsupport. Support-related questions should also be addressed to: [techsupport@firewall-servers.com](mailto:techsupport@firewall-servers.com) .

The iSentryIII is factory configured to operate in a Transparent Bridge configuration. This means the appliance sits between a Router which is connected to the Internet (cable, DSL or other high speed source) and a switch to which the workstations are attached. See Figure 1 as an example of this configuration.

## Initial Setup

The initial setup is performed off-line before attaching the appliance to the operational network. For this, a standard keyboard and monitor are required. These may be removed after installation and the appliance operated in “headless” mode or left in place.

Remove from the shipping box the iSentryIII Appliance main unit and two power cords. Plug the coaxial connector into its receptacle in the bottom right hand corner (rear of unit facing you). Plug the monitor into its receptacle near the bottom left corner. Then plug the keyboard into the lower mini port which is purple in color. Plug the appliance’s power cord into a 110VAC receptacle and turn on the monitor. Then push and release the right-most button on the front panel.

The unit should begin its boot-up sequence and a great deal of information will scroll across the screen. At the end of a successful boot-up, the following two lines will appear at the top of the screen:

### **iSentryIII v3.0.2i – Firewall Servers**

#### **iSentryiii login:**

After the colon, type “**root**” then hit the Enter key

The next line that appears will be:

#### **Password:**

After the colon, type “**admin**” then hit the Enter key

Then on the screen will appear:

#### **Last login: (some date)**

**root@isentryiii:~#**

At the # prompt type: **ifconfig br0** hit the Enter key (note the last character is **zero**)

The second line of the returned message should have a data string similar to:

**Inet addr: 192.168.2.150 Bcast: 192.168.2.255 Mask: 255.255.255.0**

From Line 2 of Appendix A setup sheet, input your chosen address by the command:

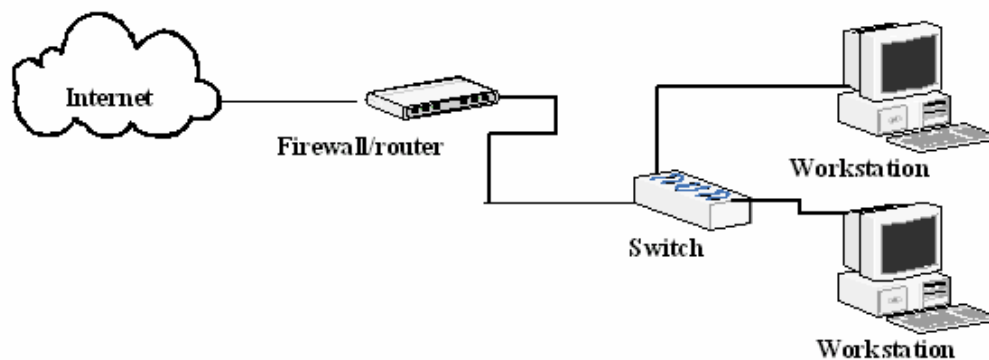
**ifconfig br0 192.168.\_\_\_\_.\_\_\_\_** then hit the Enter key.

Initial appliance box set-up is now completed.

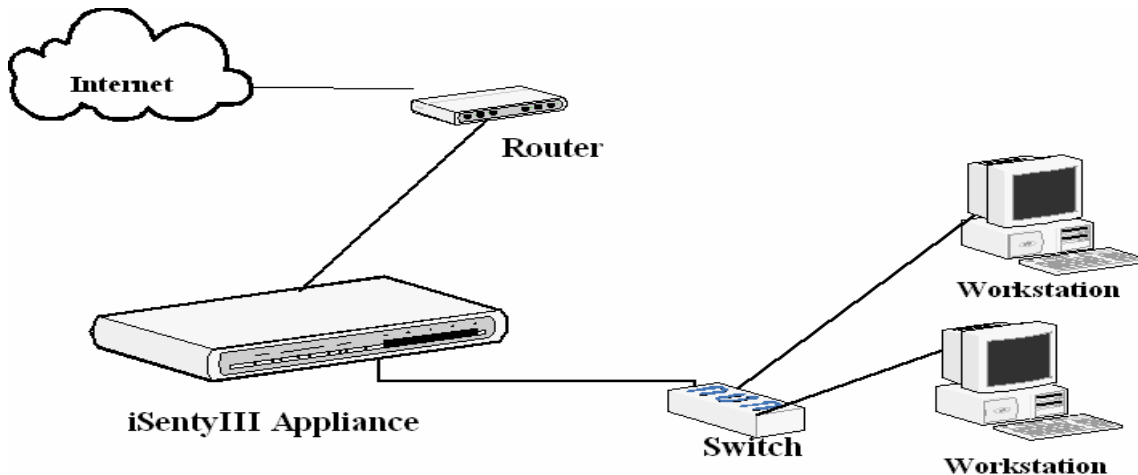
## Network Set-up

Before proceeding, you need to fill out the form attached as Appendix A. **Do Not** proceed with installation until you can correctly and completely do this or there is a possibility of not having a properly installed appliance which will prevent access to the Internet.

Once all of the needed information has been gathered and filled into the Appendix A form, proceed with physically attaching the iSentryIII appliance to the network. It is assumed that the network has, as a minimum, a firewall/router which is attached to the outside Internet source such as: cable, DSL, T1 etc. Attached to the router will be switches/hubs to which the workstations are attached. See the following diagram for a simplified schematic of the setup.



The iSentryIII appliance is designed for ease of installation and optimum performance when installed as a "Transparent Bridge". In this configuration, the appliance is inserted between the router and switch(es) so that all of the URL requests made by each workstation pass through the appliance so that total content filtering can be achieved.

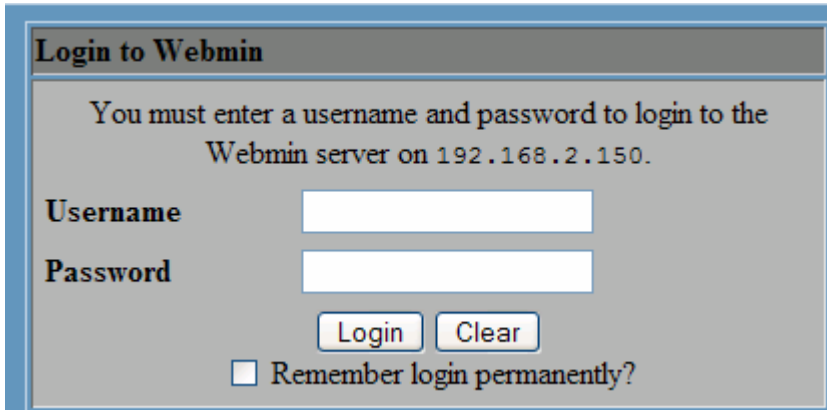


On the rear of the appliance there is a red sticker in the upper right quadrant near a standard Ethernet RJ-45 socket. Plug the cable FROM the Router into this socket. In the center of the rear panel is a second RJ-45 socket. Plug the cable FROM the switch into this socket. All of the cabling is now complete.

From the any workstation on the LAN start a browser and enter the following into the browser's address bar the address chosen in Line 2 of Appendix A followed by :10000

For example: http://192.168.1.233:10000

This will take you to the Webmin login page:



**Login to Webmin**

You must enter a username and password to login to the Webmin server on 192.168.2.150.

**Username**

**Password**

Remember login permanently?

Type in the Username: **admin**

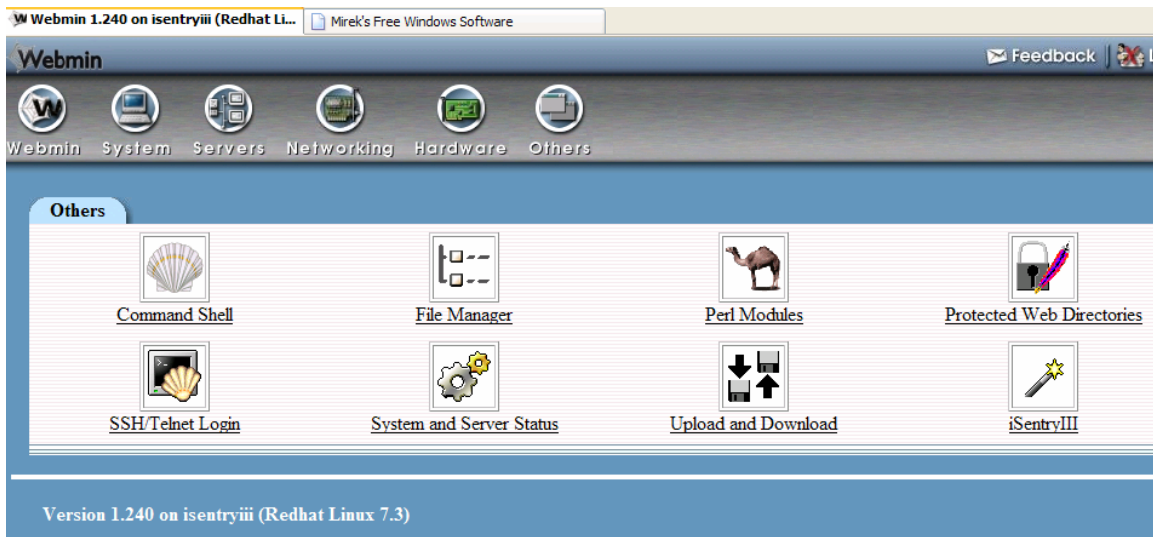
Type in the Password: **admin**

Click the "login" button which will take you to the opening menu for Webmin

### **CAUTION**

Webmin has many menus and sub-menus, all of which are important to the overall proper operation of your iSentryIII appliance. Feel free to explore but **DO NOT** make any changes except for those directed in this manual.

Left click once on the right-most button in the tool bar marked “**Others**”. This takes you to:



Left click on the right-most button on the second row “**iSentryIII**”. This leads to the pages which will be most frequently used by the administrator.

The second and third to last lines of this page (**Setup Script** and **Setup Default Addresses**) are used only during initial set-up.

[Create a new custom command.](#) [Create a new file editor.](#)

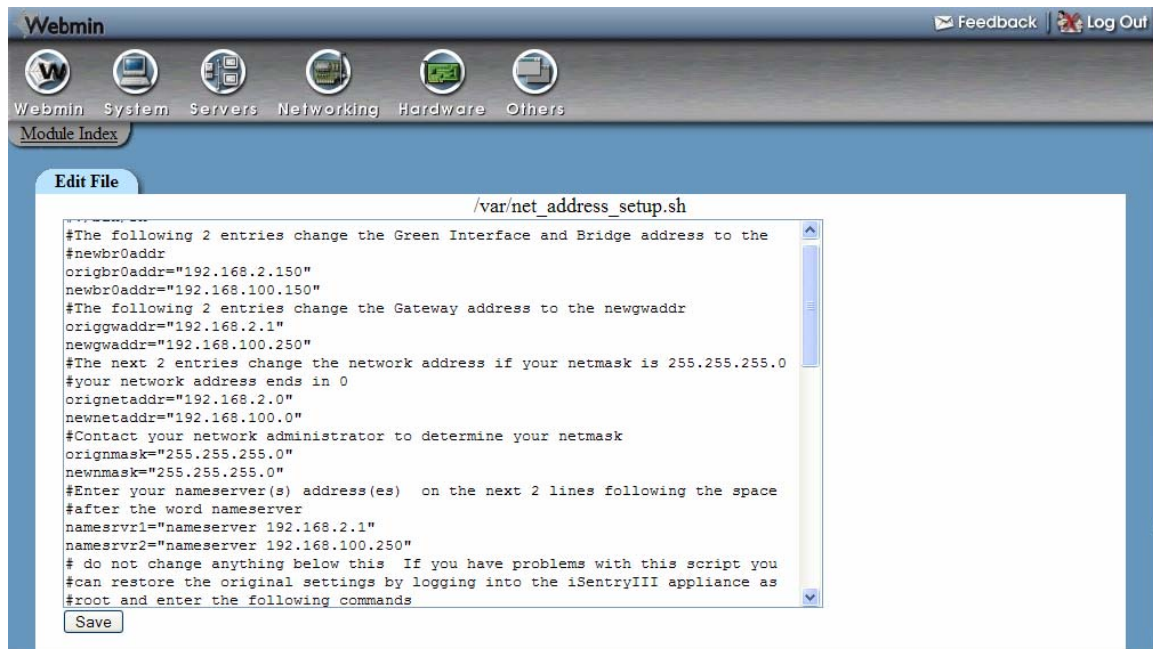
Command	Description	
<a href="#">iSentryII Group Configuration Editor</a>		<a href="#">Edit..</a>
<a href="#">Private Filter Editor</a>		<a href="#">Edit..</a>
<a href="#">Trusted Filter Editor</a>		<a href="#">Edit..</a>
<a href="#">Trusted Only Filter Editor</a>		<a href="#">Edit..</a>
<a href="#">Blocking Message Editor</a>		<a href="#">Edit..</a>
<a href="#">Proxy Bypass Configuration Editor</a>		<a href="#">Edit..</a>
<a href="#">Regular Expression Editor</a>		<a href="#">Edit..</a>
<a href="#">Content Filter Group 1 Proxy Log File</a>		<a href="#">Edit..</a>
<a href="#">Content Filter Group 2 Proxy Log File</a>		<a href="#">Edit..</a>
<a href="#">Content Filter Group 3 Proxy Log File</a>		<a href="#">Edit..</a>
<a href="#">Content Filter Group 4 Proxy Log File</a>		<a href="#">Edit..</a>
<a href="#">Content Filter Group 5 Proxy Log File</a>		<a href="#">Edit..</a>
<a href="#">Setup Script</a>		<a href="#">Edit..</a>
<a href="#">Setup Default Addresses</a>	Only Run after editing the Setup script.	<a href="#">Edit..</a>
<a href="#">Transparent Proxy Bypass Editor</a>		<a href="#">Edit..</a>

[Create a new custom command.](#) [Create a new file editor.](#) [Create a new SQL command.](#)



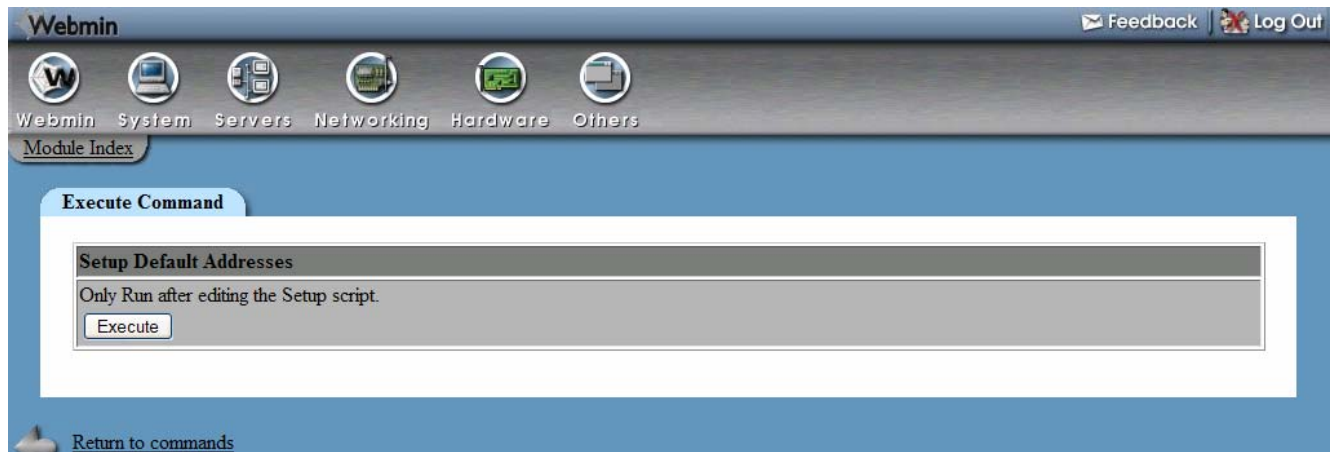
[Return to index](#)

Left click once on “**Setup Script**” (third from the bottom) to open the following page:



From the Appendix A data setup sheet make ALL necessary changes to the lines beginning with “**new**” being careful not to change the format or to delete the quotation marks. After rechecking your entries, left click only once the “**Save**” button.

Go back one page to the Setup Page and left click once “**Setup Default Addresses**”.  
(**Second from the bottom**) This takes you to:

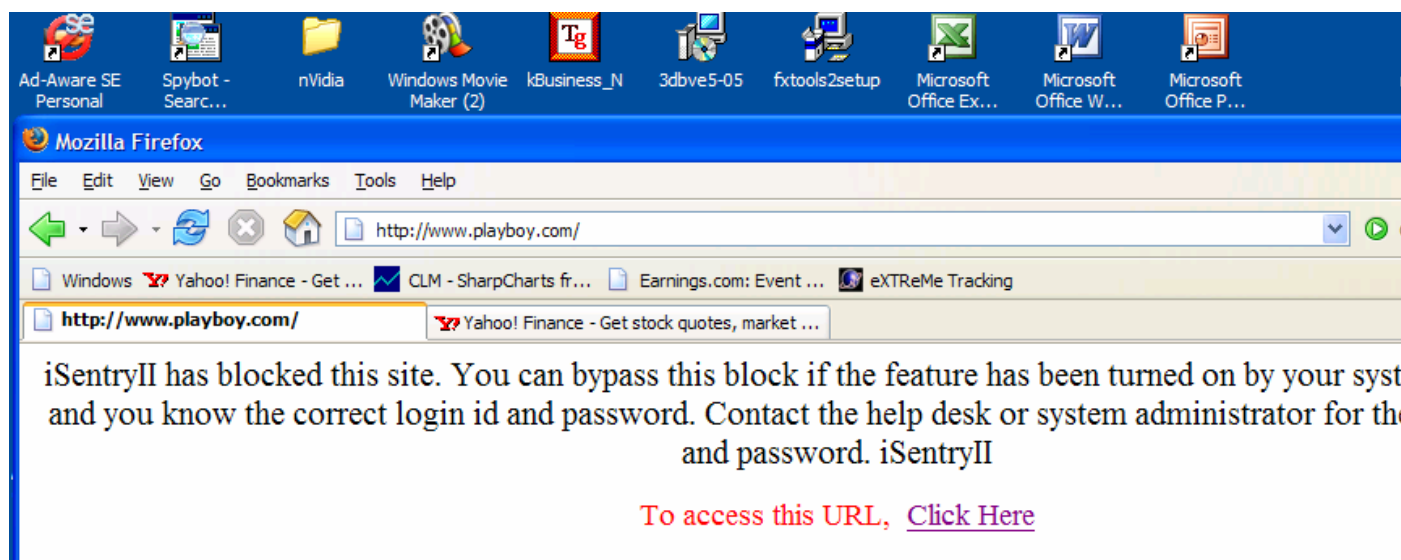


Click once the “**Execute**” button.

This completes the basic setup of the iSentryIII appliance.

### **Reboot the appliance from its keyboard with: CTRL-ALT-De!**

After the reboot is complete, all attached workstations should be operational and able to reach the Internet the normal manner, except for the filtering of objectionable materials. As a test, attempt to reach the site: [www.playboy.com](http://www.playboy.com) . This site should be blocked by the pornography category and the following message will appear on the screen:



Bypassing can be achieved, if allowed, by issuing both the “Login” and “Password” to authorized users.

**iSentryII Content Filter**

You are attempting to bypass the default content filter.

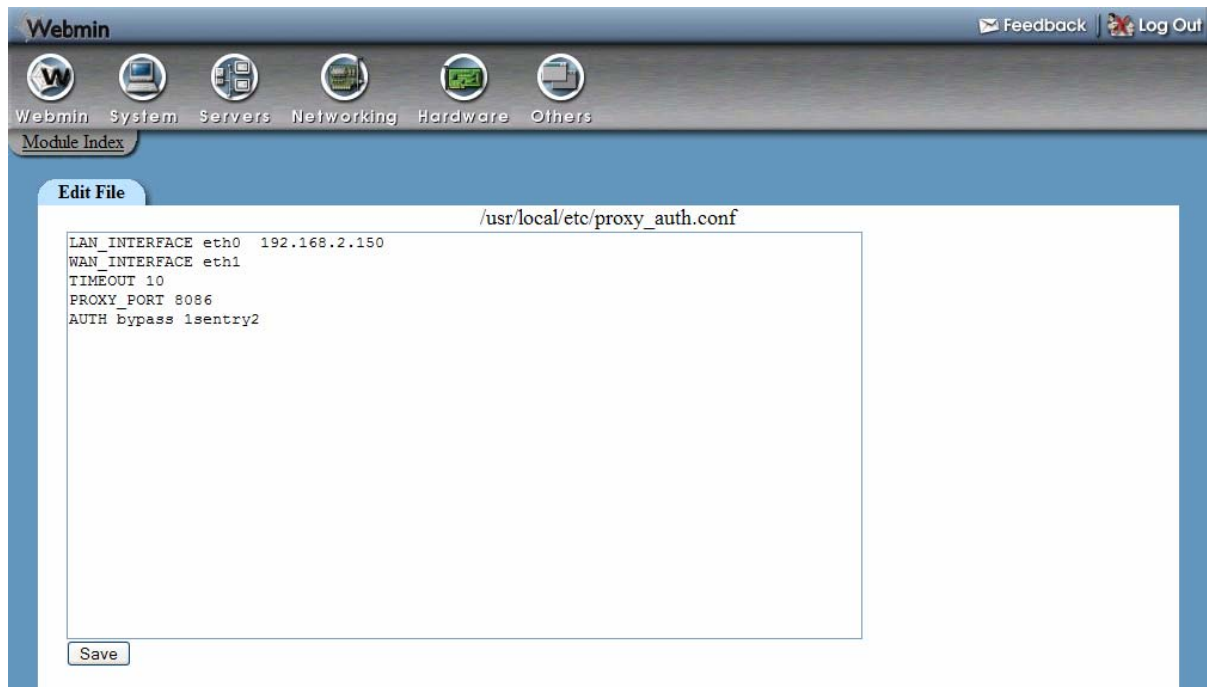
You must enter a valid Login Name and Password for this operation to succeed.

Should your attempt fail or the default time period allowed by the system administrator expire, you will return to the default filter.

Login	<input type="text" value="bypass"/>
Password	<input type="password" value="*****"/>
<input type="button" value="Submit"/>	

The default Login is: **bypass** and the default password is: **1sentry2** .  
After the Bypass Connection is established, the browser screen will return to the Blocked Screen message. Complete totally unfiltered surfing now can take place from this workstation for one hour OR it can be terminated by re-booting the workstation. After re-booting the workstation and opening the browser, the proscribed filtering will be back in effect. To test this feature, after executing the Bypass Connection, surf to [www.playboy.com](http://www.playboy.com) which should now be available.

The length of time that Bypass Connection is active and the Bypass Password can be controlled from the screen:



Enter the desired **TIMEOUT** in seconds, click the save button.

The password can be changed anytime by re-accessing this page and enter the new password at: **AUTH bypass**, click the save button.

**\*\*\*CAUTION\*\*\***

Save the new password somewhere that can be found at a later date. It cannot be retrieved by Firewall Servers!

The appliance must be rebooted to activate either of these commands.

## **CONCLUSION**

At this point, all workstations connecting through the iSentryIII Appliance will be subjected to the predefined default filtering rules shipped in the unit. To make further changes, such as: defining unique filtering groups, adding to the Trusted, Trusted Only and Private websites see the document: **iSentryIII Administration Manual.**

## **NOTE**

For all workstation which will use any of the webmail programs, i.e.: Hotmail, Yahoo, gmail, etc and will be transmitting messages with attachments, please read the section "Setup for Additional Groups" in the "iSentryIII Administration Manual".

## APPENDIX "A"

### Required Network Information Needed Before Beginning Setup

1. Router Gateway Address: \_\_\_\_\_.\_\_\_\_.\_\_\_\_.\_\_\_\_ (i.e.: 192.168.1.1)  
This info is available in your Router's Setup or Quick Start documentation
2. Choose an unused address on your LAN: i.e. 192.168.\_\_\_\_.233  
This is defined as "newbr0addr" and is also used as "nameserver 1".  
Note: the third address field must be the same as the third field of your Router  
This is the address you will need on Page 2 to begin configuration and on Page 3 to complete setup.
3. newgwaddr: \_\_\_\_\_.\_\_\_\_.\_\_\_\_.\_\_\_\_ This is the data in 1 above
4. If your network netmask ends in a 0 i.e. 255.255.255.0 then  
Newnetaddr: **192.168.\_\_\_\_.0**  
(the blank field will be the same as the third field of your Router's address)

These data are necessary to properly configure the iSentryIII appliance. Do Not begin installation until all of this information is available to you.